



bollards

safelite 600 bollard shells

main features

Designed for primary routes such as Highway Agency Roads to give indications to fast moving traffic of island central reservation or roundabouts.

All signfaces and panels are an integral part of the rotational moulding, up to 40% of the nominal wall thickness. This gives a long fade free life and prevents removal by scratching or solvents - such as graffiti removers.

Provides a highly visible illuminated marker and direction indicator.

Rigid, flexible and retro-reflective versions available.

*Guaranteed against fading for 5 years.



Solvent / scratch resistant



Saflite 600 Re-flex bollard



HALDO



bollards

safelite 600 bollard shells

specification

Bodyshell

Rotationally moulded one-piece U.V. stabilised material with galvanised steel liner in baseplinth. Signfaces and panels integrally moulded. Illuminated versions to be used with a 3 x 11 watt basebox or the LED light tray.

Dimensions - see fig.1 & fig.1a

Single aspect Class only

Rigid Safelite 600 bollard shell - MDP material

Part Number C2/BL2/SFL/11.

Re-flex Safelite 600 bollard shell - Re-flex material

Part Number C2/RFX/SFL/11.

Retro-reflective Safelite 600 bollard shell

Part Number C4/OMB/SFL/11 - High visibility material.

Part Number C4/OMB/DIASFL11 - Diamond grade retro-reflective material

To order select the DTp diagram number for the signface from the range below (fig. 2) and specify in brackets after the part number e.g. C2/BL2/SFL/11(610L) MDP bodyshell with keep left arrow.

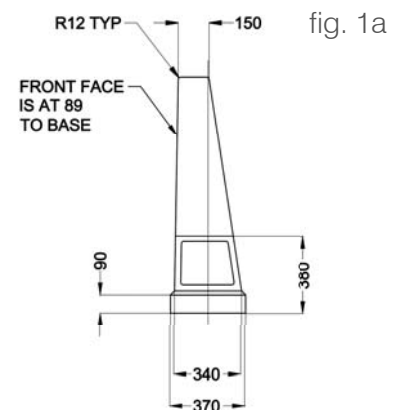
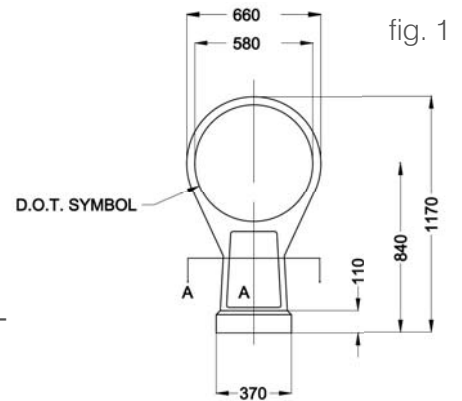


fig. 2



HALDO



Haldo Developments Limited

Western Way Bury St. Edmunds Suffolk IP33 3SP UK

T. +44 (0)1284 754043 F. +44 (0)1284 767260

info@haldo.com

www.haldo.com

Haldo Developments Ltd is a co. registered in England and Wales

Reg no.940159

VAT No. GB 102 351627